



## Technical Insulation Covers

### Overview

Sustain's Insulation covers reduce heat loss in your plant room. Covers can be manufactured with a variety of different insulations, facings and sewing threads for different temperature ranges and environmental conditions.

### Application

Intended for indoor, plant-room use in order to reduce heat loss from pipes and fittings.

### Typical Specification

- 420g/m<sup>2</sup> silicon coated glass cloth covers
- 50mm ductwrap mineral fibre insulation infill
- Fire resistant velcro straps
- Draw cords to ensure snug fit

### Standards

- Compliant with current building regulation requirements
- All covers meet or exceed BS5422 standards

### Benefits

- Low environmental impact
- 25 year guarantee
- Payback period of 2 years
- Full project management of installation
- Individually designed and manufactured to fit your plantrooms

### Our Service

- Free non-disruptive survey of your buildings
- Full energy report with detailed costs, savings and payback times
- Full project management of installation

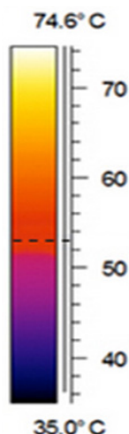
### For more information

call: 0117 403 2700

email: [info@sustain.co.uk](mailto:info@sustain.co.uk)

visit: [www.sustain.co.uk](http://www.sustain.co.uk)

### Before installation



### After installation

